

# Portable EV Charger

PC100 / PC100-3k6  
/ PC100-7k2  
/ PC100-11k

User Manual

# CONTENTS

---

IMPORTANT NOTICE	01
SYMBOL LEGEND	02
PRODUCT OVERVIEW	03
OPERATING INSTRUCTIONS	04
INSTALLATION	08
SPECIFICATIONS	09
FAULT INDICATIONS	10
WARRANTY SERVICE	11

# IMPORTANT NOTICE

## Note:

The term "product" and "charging equipment" both refer to the PC100.

This document contains warnings and important information that must be followed when using the product.

## Warnings

The following warning and hazard symbols are used in this user manual.

### DANGER

Texts marked with this symbol contain information for your safety and point out hazards that present the danger to you of serious or even fatal injuries.

### CAUTION

This symbol is intended to make you aware of potential risks of damage that demand your heightened caution.

## Safety information

### DANGER

- Before each use, check if the product is damaged. If there is any obvious damage, do not use the device.
- If the product is damaged during charging, it should be immediately disconnected, or the power fuse should be switched off to cut off the power. Do not touch any live parts.
- Charge your EV only at undamaged sockets and functional electrical setups.
- Do not use external cables and adapters.
- Do not use this product near flammable or explosive gases, as the device may generate small electrical sparks, leading to an explosion.
- Never touch the contact surfaces of the charging equipment. Do not insert any objects into the charging equipment connector faces.
- Do not attempt to modify or repair your charging equipment in any way yourself.
- Do not let children play with the packaging material or the charging equipment.

- Do not connect the charging equipment into a power outlet that is not properly grounded.
- Do not use the charging equipment when either you, the vehicle or the charging equipment is exposed to severe rain, snow, electrical storm or other inclement weather.
- Do not plug the charging equipment into an electrical outlet that is submerged in water.

### CAUTION

- Protect the plug and power sockets against humidity and moisture.
- Unplugged connector are not watertight.
- Always cover them with the protective caps when not in use.
- Do not operate the charging equipment in temperatures outside its operating range of -30°C to +50°C.
- This product should be used at altitudes below 3000 meters.
- This product should be used within the specified parameter range.



# SYMBOL LEGEND

The following symbol legend are used in this user manual / or on the charging equipment / or on the package box.



CE marking indicates that a product has been assessed by the manufacturer and deemed to meet EU safety, health and environmental protection requirements. It is required for products manufactured anywhere in the world that are then marketed in the EU.



Please do not dispose of this device in your standard household waste. This device is subject to the regulations defined in European Directive 2012/19/EU. Have your device disposed of by an authorised waste disposal and recycling firm and your local waste management authority. In case of doubt, please contact your waste disposal facility.



This symbol indicates the lowest possible operating temperature ( $-30^{\circ}\text{C}$ ) at which the device may be operated.



Improper use may pose a risk of electric shock.



This symbol indicates general danger or hazard. Read the User Manual to familiarise yourself with the charging equipment.



This product meets the requirements of Ingress Protection Class IP65, which grades the resistance of an enclosure against the intrusion of dust or liquid.



Separate the packaging and electrical device by material type for disposal. Place all paperboard and corrugated fibreboard in paper recycling, foils and films with a waste materials collection centre, and have the electronic components properly disposed of by a specialist electrical retailer or a local recycling centre.



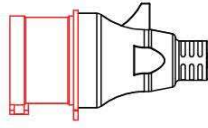
The Restriction of Hazardous Substances Directive 2002/95/EC, short for Directive on the restriction of the use of certain hazardous substances in electrical and electronic equipment.



Measures to ground the metal casing of electrical equipment. It can prevent strong current from passing through the human body when the metal casing is charged under the condition of insulation damage or accident, so as to ensure personal safety.

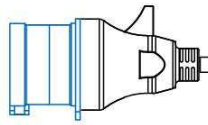
# PRODUCT OVERVIEW

11K Version



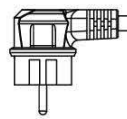
CEE16 400V 16A

7K2 Version

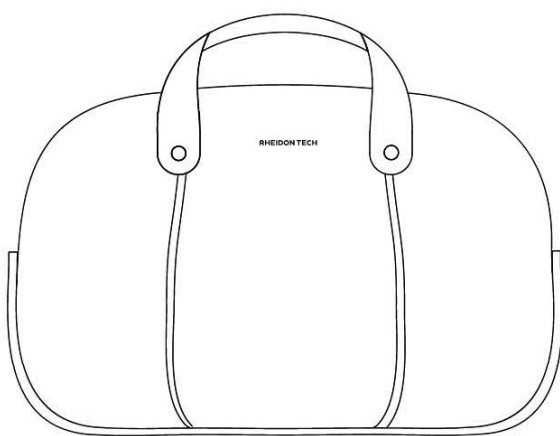


CEE32 230V 32A

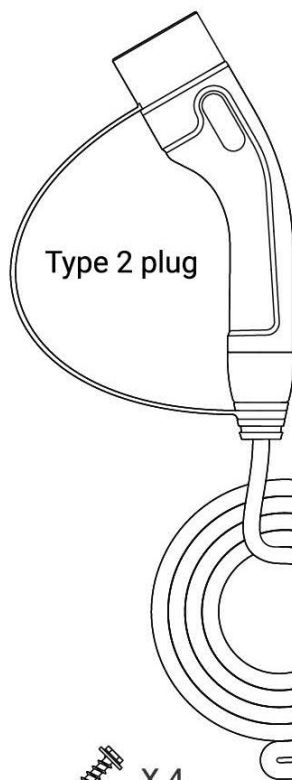
3K6 Version



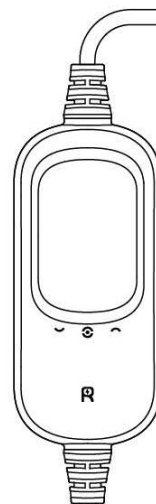
Schuko IP44



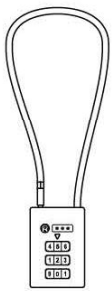
Travel carrier



Type 2 plug



PC100 EV charger



Cable lock



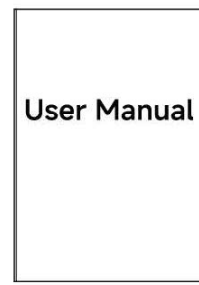
Anti-theft bracket



M4 X 25mm  
Screw



M6  
Wall anchor

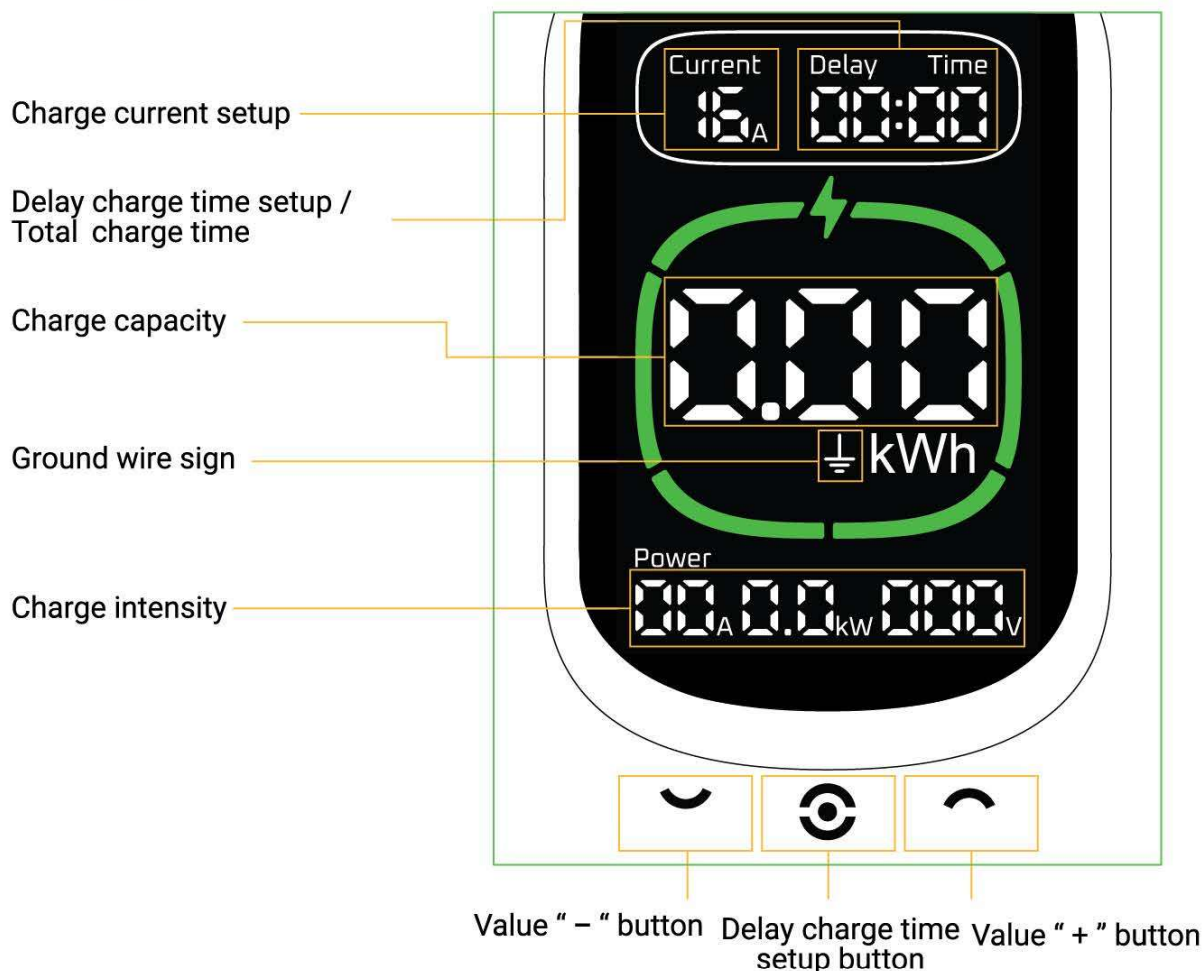


User Manual

User manual

# OPERATING INSTRUCTIONS

## Operating Panel on the Charger Device



### CAUTION

- Protect your charging equipment against damage from being run over, dropped, yanked, kinked or crushed.
- To prevent overheating while charging, do not expose your PC100 to direct sunlight or other sources of heat for long periods of time.
- In many countries, industrial power outlets must be equipped with a Type-A residual current device (RCD). We recommend that a Type-A RCD be installed in power sockets of any kind. Please note the regulations in the country of use, as these always take precedence.
- As the PC100 is already fitted with a built-in DC residual current monitor, you don't have to bother with pricey installation of a Type-B RCD or Type-A RCD.

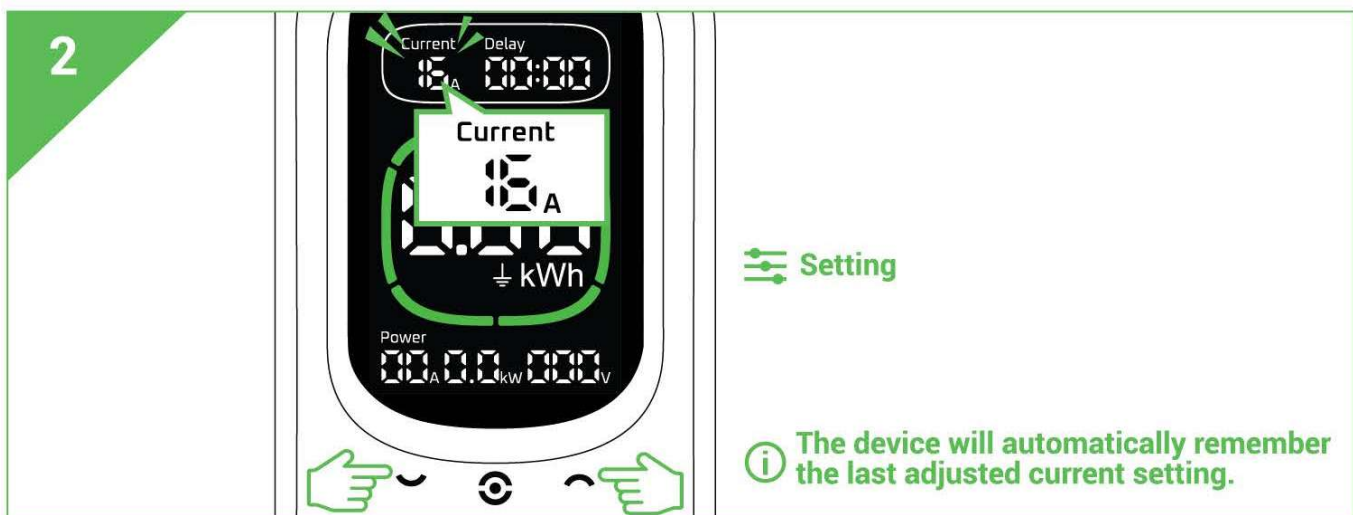
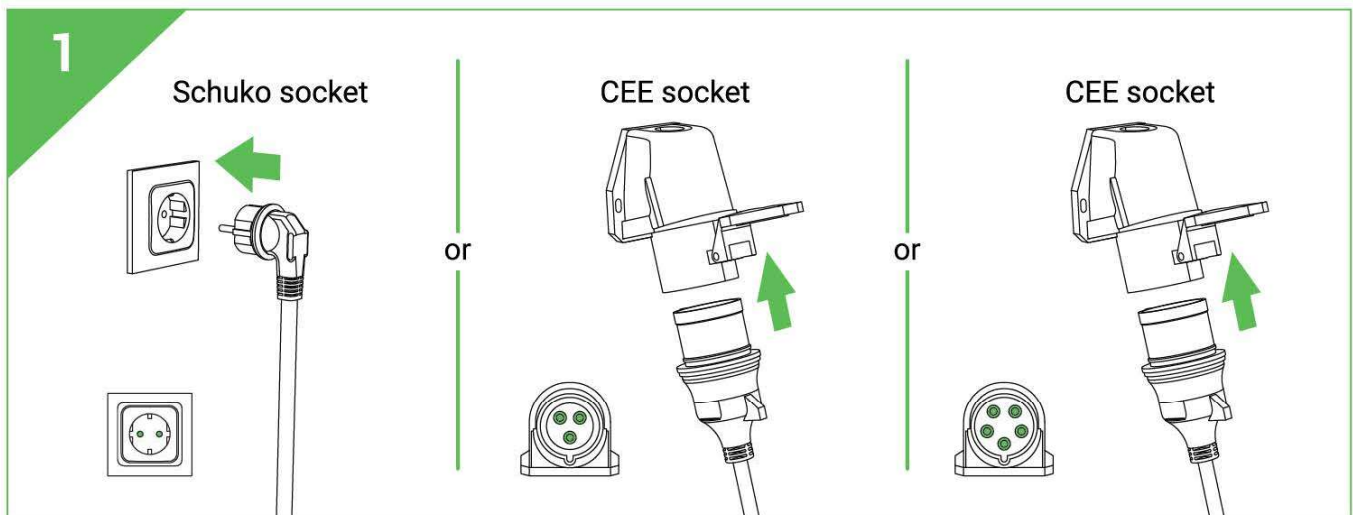


# OPERATING INSTRUCTIONS

## Charging Operation

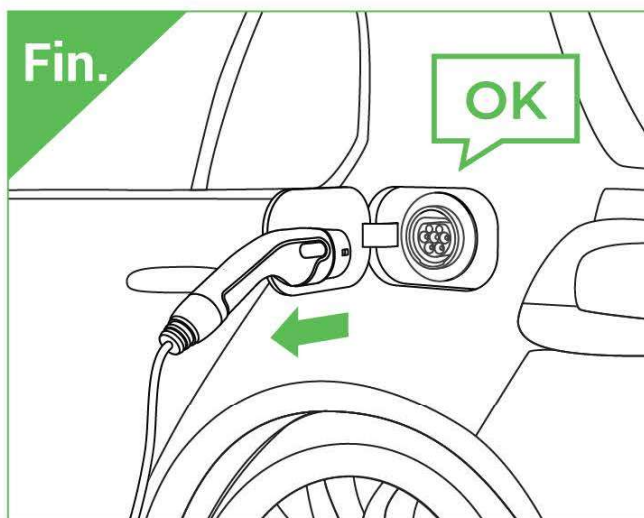
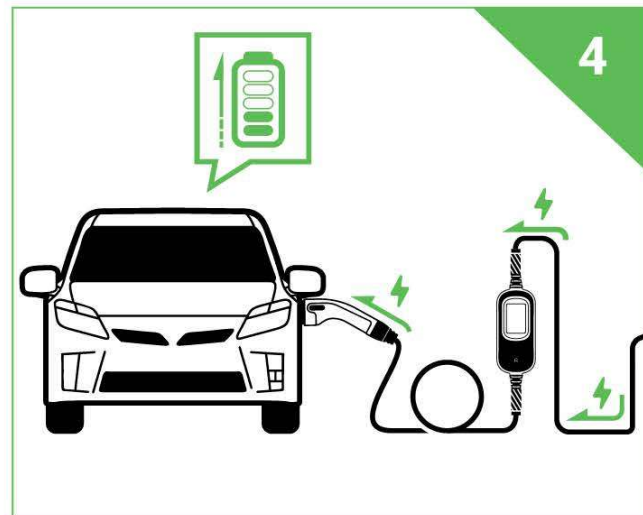
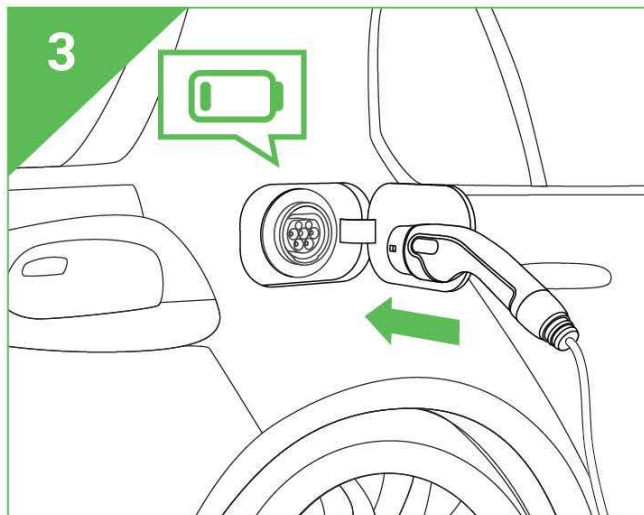
### CAUTION

- Always perform charging operations in the specified order of steps.
- Never disconnect any plug (neither from the power socket, nor on the PC100) while the charging process is ongoing.
- Potential charging faults (FAULT) are identified on the device's function display. (further information in this regard can be found in the fault indications table).




# OPERATING INSTRUCTIONS

## General Charging Mode



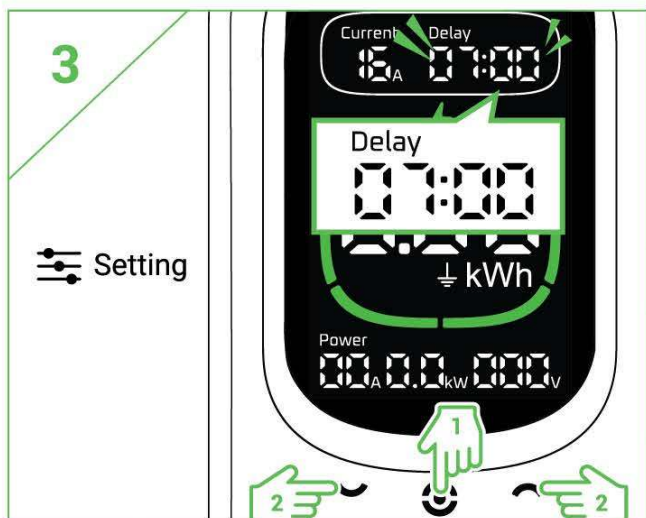
### ⚠ CAUTION

- If an E3 error appears, ensure the socket's grounding is correct. In urgent cases, hold the middle button  for 5 seconds to bypass ground detection and charge. This may increase electrical safety risks, so avoid using it if possible.
- The electrical parameters displayed from the charger reflects the actual situation, which may differ from the displayed by the EV. This discrepancy can be attributed to the efficiency of the vehicle's On-Board Charger (OBC).
- Ensure that the current of the power socket can support the current set by the charging device. Schuko Plug just can support Max 16A, and the max current is 32A when CEE 32 230V 32A is in charging. For safety reasons, it is forbidden to use more than 16A when connecting the schuko plug.
- Do not use external cables and adapters, and do not plug the charging equipment into an electrical outlet that is submerged in water.

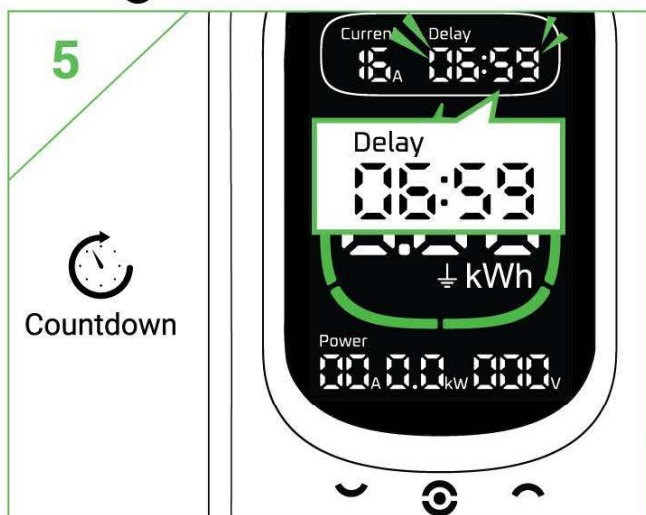
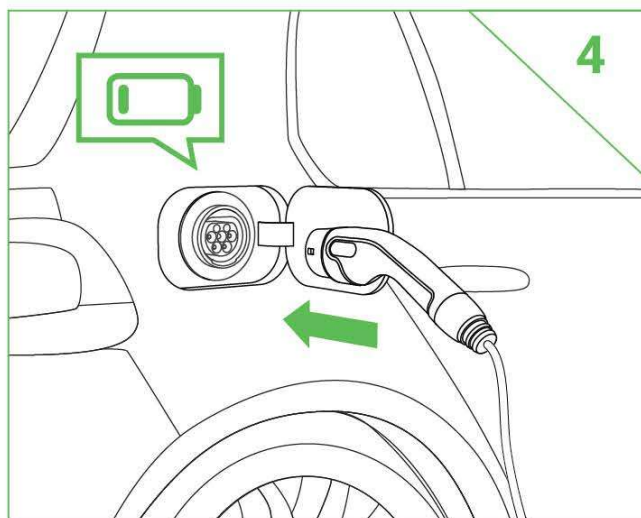


# OPERATING INSTRUCTIONS

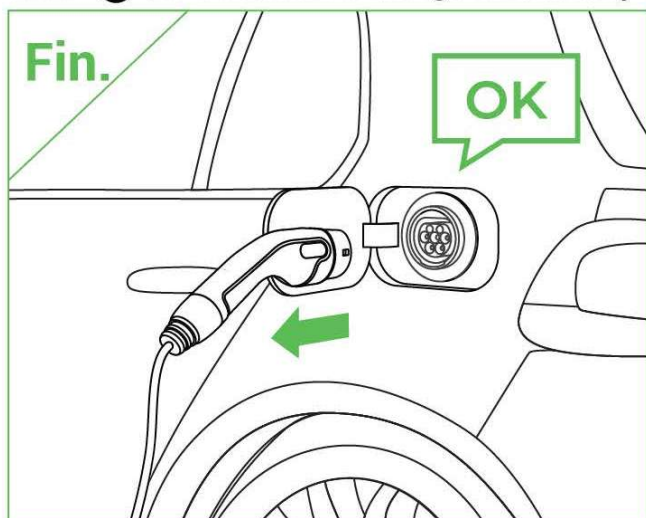
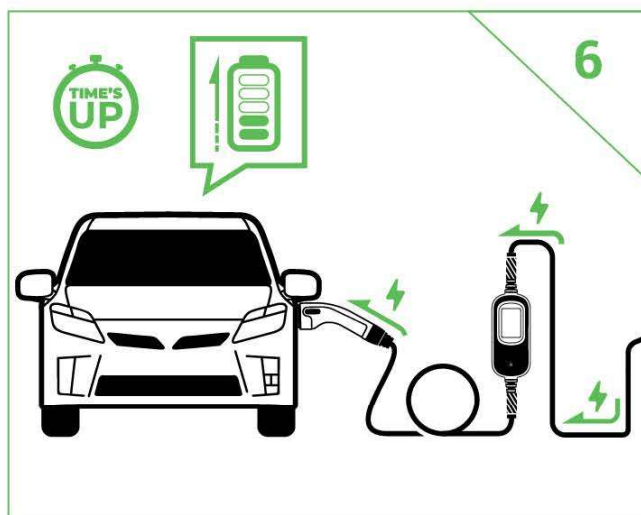
## Delayed Charging Mode - Continue from page 5



Press "Confirm" to switch hour / minute / confirm

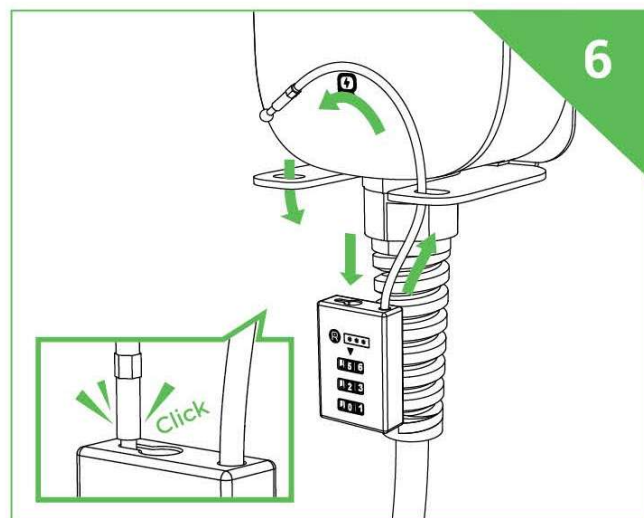
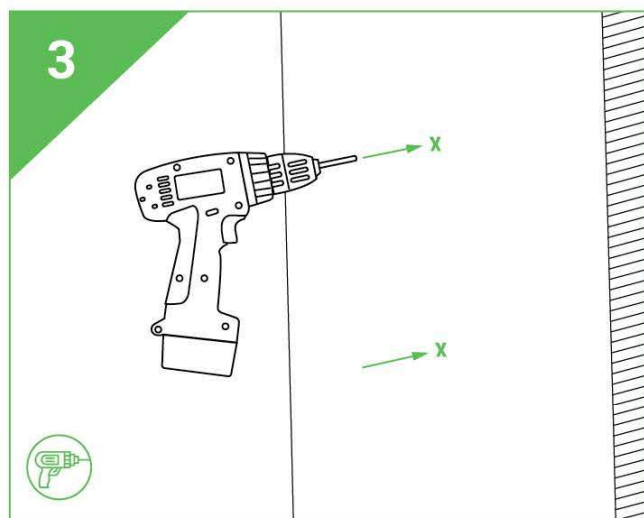
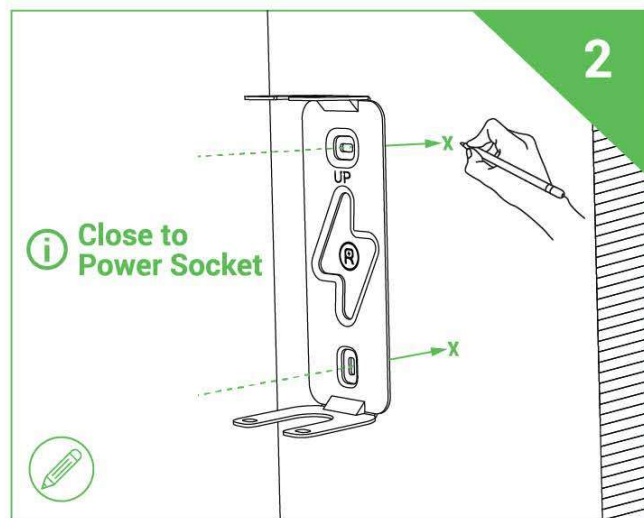
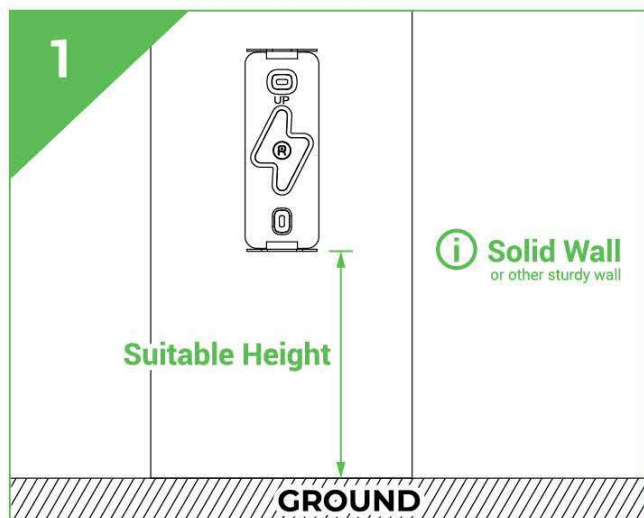


Hold "Confirm" for 5 seconds to charge immediately



# INSTALLATION

## Install Anti-theft Bracket



The default password is "000", refer to the lock manual for detailed operating instructions.

# SPECIFICATIONS

## YOUR CHOICES

Model Number	PC100-3k6	PC100-7k2	PC100-11k
Charging Power (Max)	3.6kW	7.2kW	11kW
Input	230V 6-16A Manual Adjustable	230V 6-32A Manual Adjustable	400V (3-phase) 6-16A Manual Adjustable
Power Plug	Schuko IP44	CEE32 230V 32A 1-phase	CEE16 400V 16A 3-phase
Weight	4kg	4.1kg	4.3kg

## QUALITY

Input Cable	1.2m
Charging Cable	6m
Charger Size	212 x 94 x 65mm
Connector	Type 2
Operating Temperature	-30°C to +50°C
Storage Temperature	-30°C to +60°C
Altitude Limit	< 3000m


## Safety and Standards

IP protection rating	IP65 ( Charger ) IP44 ( Schuko Plug ) IP65 ( CEE 32A 230V 1-phase/CEE 16A 400V 3-phase )
Protection	Leakage Protection Grounding Protection Over Current Protection Anti-Thunder Protection Over Temperature Protection Plug Temperature Protection Short Circuit Protection Low Voltage protection High Voltage Protection
Standards	EN IEC 62752:2016+A1 EN IEC 61851 EN IEC 61000-6-1:2019 EN IEC 61000-6-3:2021 EN IEC 62196, RoHS



# FAULT INDICATIONS

## CAUTION

- In case of a fault, the associated display red Error Code. Please use the relative solution based on the error code.
- If an E3 error appears, ensure the socket's grounding is correct. In urgent cases, hold the middle button  for **5** seconds to bypass ground detection and charge. This may increase electrical safety risks, so avoid using it if possible.
- Carefully note any error messages before contacting Customer Service.

Error Code	Status Description	Solution
<b>H1</b>	Over Temperature (Plug)	Power off and check the electric car and charger that the socket supports the set current
<b>E1</b>	RCD Leakage Protection	Power off and check the electric car and charger
<b>E2</b>	Over Current	Power off and check the electric car
<b>E3</b>	Ground (PE) Disconnect	Power off and check the distribution grid
<b>E4</b>	Over Voltage / Under Voltage	Power off and check the distribution grid
<b>E5</b>	Welding Fault	Please contact the manufacturer
<b>E6</b>	CP Voltage Error	Check if the connector is tight
<b>E7</b>	Over Temperature (Device)	Check shell heat dissipation
<b>E8</b>	Diode Loss	Check EV CP diodes

# WARRANTY SERVICE

## Warranty and Guarantee

**Claims under statutory guarantee or our warranty must be promptly reported upon discovering a defect within the respective guarantee or warranty period. Both periods commence from the date of purchase or delivery.**

### Warranty

The warranty is valid for two years from the date of purchase and is regulated by law.

### Guarantee

- The warranty period is 2 years from the date of purchase. The warranty is applicable to the country where the device was purchased.
- During the warranty period, devices that are faulty due to material or manufacturing defects will be repaired or replaced at our discretion. Exchanged devices thereof become our property. Exercise of the warranty shall not extend the warranty period or trigger a new warranty.

### Making Warranty Claims

Have the following documents ready, as they form the basis for making claims arising from your guarantee or warranty :

- Delivery note (date of start of the warranty period) - Invoice (proof of purchase)
- Please contact our Customer Service (see the section on Customer service).
- Do not under any circumstances send your device to one of our warehouses without first making contact with us, as our Service Centres are located elsewhere. In such cases, the parcel would be returned to you at your own expense.

### Warranty Exclusions

In the following situations, the warranty is void:

- The product is intentionally damaged or modified.
- The product is not used in accordance with the product manual and instructions.
- The product suffers damage due to accidents, floods, fires, or other natural disasters.
- Slight scratches during use is a normal phenomenon.
- Issues arising from unauthorized repairs or disassembly.
- The warranty period has expired.

### Customer Service

- If you require after-sales service, please contact our customer service team promptly, providing a detailed description of the issue and the purchase receipt.
- We will offer you after-sales support as soon as possible, including remote guidance, repair services, or replacement services.

### Provider

100MEGA Distribution s.r.o. Czech Republic, E-Mail: bat@100mega.cz

# RHEIDON TECH